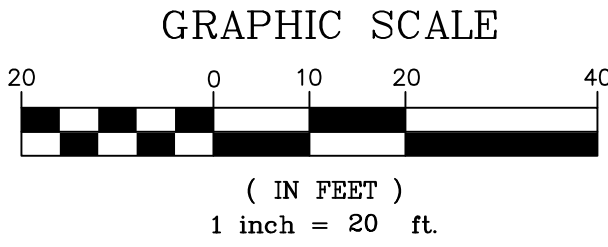
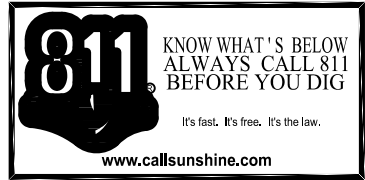
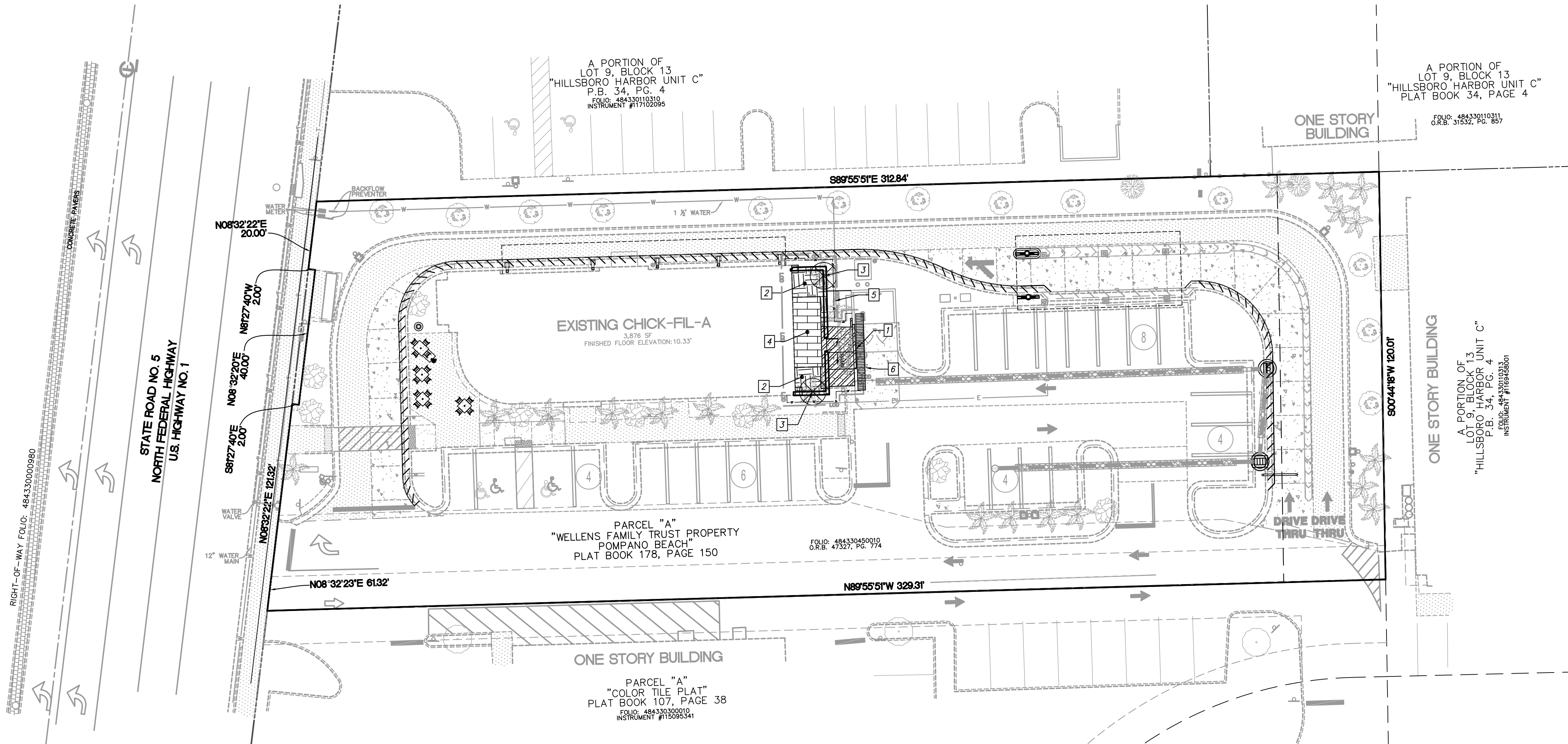


THIS DOCUMENT, TOGETHER WITH THE CONCEPTS AND DESIGN PRESENTED HEREIN, IS AN INSTRUMENT OF SERVICE. IT INTENDS ONLY FOR THE SPECIFIC PURPOSE AND CLIENT FOR WHOM IT WAS PREPARED. REUSE OF ANY UNMODIFIED ELEMENTS OR THIS DOCUMENT WITHOUT WRITTEN AUTHORIZATION AND ADAPTATION BY BOWMAN CONSULTING SHALL BE WITHOUT LIABILITY TO BOWMAN CONSULTING.



LEGEND	
DEMO ASPHALT DRIVE	
DEMO CONCRETE	
DEMO OPEN SPACE	
LIMIT OF DISTURBANCE	
SILT FENCE	
SILT DIKE ON PAVEMENT	
PROPERTY LINE	
EX. CONCRETE PAVEMENT / SIDEWALK	
EX. CONCRETE D CURB	
EX. CONCRETE F CURB	
EX. EDGE OF SIDEWALK	
EX. SIGN	
EX. STORM INLET	
EX. PAVEMENT MARKINGS	
EX. GRADE	
EX. STORM SEWER	
EX. SANITARY SEWER	
EX. WATER	
EX. COMMUNICATIONS	
EX. TREES	

DEMOLITION NOTES

- 1 CONCRETE PAVEMENT/SIDEWALK TO BE REMOVED
- 2 OPEN SPACE TO BE CLEARED AND GRUBBED
- 3 TREE TO BE REMOVED
- 4 BUILDING TO BE DEMOLISHED FOR ADDITION
- 5 SILT FENCE
- 6 SILT DIKE ON PAVEMENT

GENERAL DEMOLITION NOTES

1. THE LOCATION OF THE UTILITIES SHOWN HAVE BEEN DETERMINED BY INFORMATION GATHERED AND SHALL NOT BE USED AS EXACT. CONTRACTOR SHALL CONTACT THE APPROPRIATE UTILITY COMPANIES TO VERIFY EXACT LOCATIONS PRIOR TO DEMOLITION.
2. THE CONTRACTOR SHALL COORDINATE WITH THE PROPER UTILITY COMPANIES FOR REMOVAL AND RELOCATIONS OF THE RESPECTIVE UTILITY. THE CONTRACTOR SHALL VERIFY ANY WORK THAT MAY BE DONE BY THE UTILITY COMPANIES.
3. CONTRACTOR SHALL PROTECT THE PUBLIC WITH BEST MANAGEMENT PRACTICES.
4. CONTRACTOR SHALL PROTECT AND MAINTAIN ALL STRUCTURES, PAVEMENT, AND VEGETATION THAT IS NOT TO BE DISTURBED AND IS RESPONSIBLE FOR ANY DAMAGES TO THEM.
5. THE CONTRACTOR SHALL PROPERLY DISPOSE OF ALL MATERIALS RESULTING FROM THE WORK, ACCORDING TO GOVERNING AUTHORITIES AND SHALL OBTAIN THE PROPER PERMITS REQUIRED FOR DISPOSAL AND DEMOLITION.
6. THE CONTRACTOR SHALL INSTALL EROSION AND SEDIMENT CONTROL DEVICES PRIOR TO DEMOLITION.
7. THE CONTRACTOR SHALL BE RESPONSIBLE FOR MAINTAINING SERVICES TO ANY NECESSARY UTILITIES DURING CONSTRUCTION.
8. FOR ALL ITEMS NOTED TO BE REMOVED, REMOVE NOT ONLY THE ABOVE GROUND ELEMENTS, BUT ALSO REMOVE ALL UNDERGROUND ELEMENTS AS WELL INCLUDING, BUT NOT LIMITED TO; FOUNDATIONS, GRAVEL FILLS, TREE ROOTS, PIPES, TANKS, ETC.
9. BACKFILL ALL EXCAVATIONS RESULTING FROM THE DEMOLITION WORK MEETING THE REQUIREMENTS FOR FILL OUTLINED IN THE GEOTECHNICAL INVESTIGATION REPORT FOR THIS SITE.
10. THE CONTRACTOR SHALL REFER TO THE ASBESTOS REPORT TO DETERMINE IF ASBESTOS ABATEMENT IS REQUIRED. IF REQUIRED, ASBESTOS AND ANY OTHER HAZARDOUS MATERIAL SHALL BE PROPERLY PERMITTED AND REMOVED BY THE CONTRACTOR. CONTRACTOR SHALL SECURE ALL PERMITS FOR DEMOLITION AND REMOVAL OF MATERIALS FROM THE SITE.
11. LIMIT SAW-CUT AND PAVEMENT REMOVAL TO ONLY THOSE AREAS WHERE IT IS REQUIRED AS SHOWN ON THESE PLANS. ANY DAMAGE TO ANY SURROUNDING AREAS SHALL BE REPAIRED / REPLACED AT THE RESPONSIBILITY OF THE CONTRACTOR. CONTRACTOR SHALL PROTECT ADJACENT STRUCTURES, PAVEMENT, UTILITIES, LANDSCAPE, ETC. FROM DAMAGE DURING CONSTRUCTION.
12. CONTRACTOR SHALL ENSURE THAT SERVICES TO ALL UTILITIES TO BE REMOVED HAS BEEN DISCONTINUED AND SHUT OFF. ALL UTILITY LINES SHALL BE CAPPED PER UTILITY COMPANY STANDARDS.
13. THE CONTRACTOR SHALL REFER TO THE LANDSCAPE PLANS TO DETERMINE IF EXISTING PERIMETER TREES/LANDSCAPING ARE TO REMAIN OR BE REMOVED.



5200 Buffington Rd.
Atlanta Georgia,
30349-2998

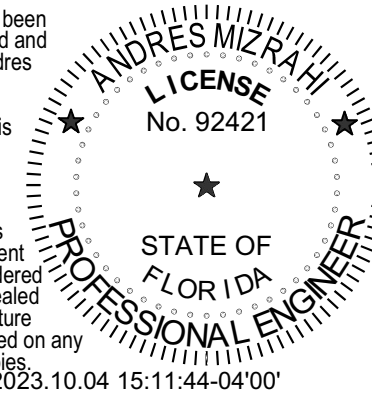
Bowman

Certificate of Authorization License No. 30462
610 SE 7th St, Suite 300
Fort Lauderdale, FL 33316
Phone: (954) 344-6461
www.bowman.com
© 2021 Bowman Consulting Group Ltd

Seal

This item has been
electronically signed and
sealed by Andres
Mizrahi, P.E.
on the date
adjacent to this
seal

Printed copies
of this document
are not considered
signed and sealed
and the signature
must be verified on any
electronic copy



ANDRES MIZRAHI, P.E.
FLORIDA REG. NO. 92421
(FOR THE FIRM)

CHICK-FIL-A
POMPANO BEACH
2250 NORTH FEDERAL HIGHWAY
POMPANO BEACH, FL 33062

FSU# 2483

REVISION SCHEDULE

NO.	DATE	DESCRIPTION
1	3/9/22	PAVEMENT & SIDEWALK SPECS
2	7/19/22	REVISED INLET RIM EL.
3	9/21/22	REVISED MENU ISLAND & STRIPING
4	10/6/22	REVISED ORDER CANOPY
5	10/26/22	EXFILTRATION TRENCH
6	12/08/22	ADA RAMP GRADING
7	12/13/22	PARKING ISLAND GRADING
8	12/13/22	SIDEWALK REVISION

CURRENT DESIGN	2021-005
NOTE APPLIED	
PROJECT #	010014-01-138
PRINTED FOR	PERMIT
DATE	10/2/2023
DRAWN BY	ST

Information contained on this drawing and in all digital files
produced for above named project may not be reproduced in
any manner without express written or verbal consent from
authorized project representatives.

SHEET
DEMOLITION PLAN -
EROSION CONTROL
SHEET NUMBER

FOR PERMIT

C-1.2